

# CMC1 prothese

Dr Joris Duerinckx  
Hand-, pols- en elleboogchirurgie



Orthopedisch  
Centrum  
Limburg

ORTHOPAEDIC  
SURGERY AND  
TRAUMATOLOGY

# CMC1 prothese: geschiedenis



1960



1990



Arpe  
Maia  
Ivory  
Moovis  
Isis  
Guepar  
...

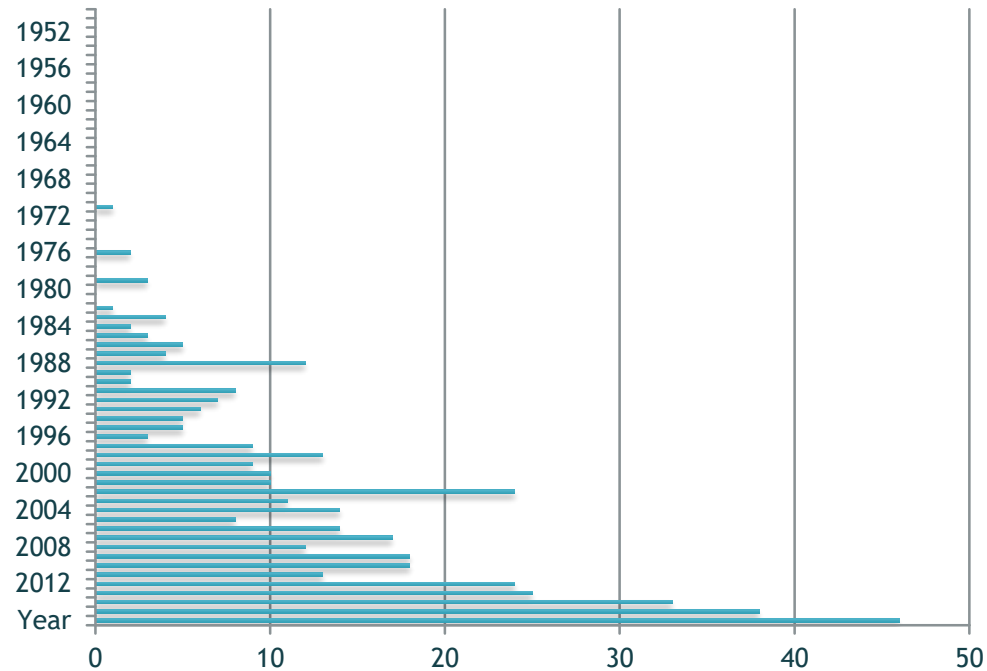


Orthopedisch  
Centrum  
Limburg

ORTHOPAEDIC  
SURGERY AND  
TRAUMATOLOGY

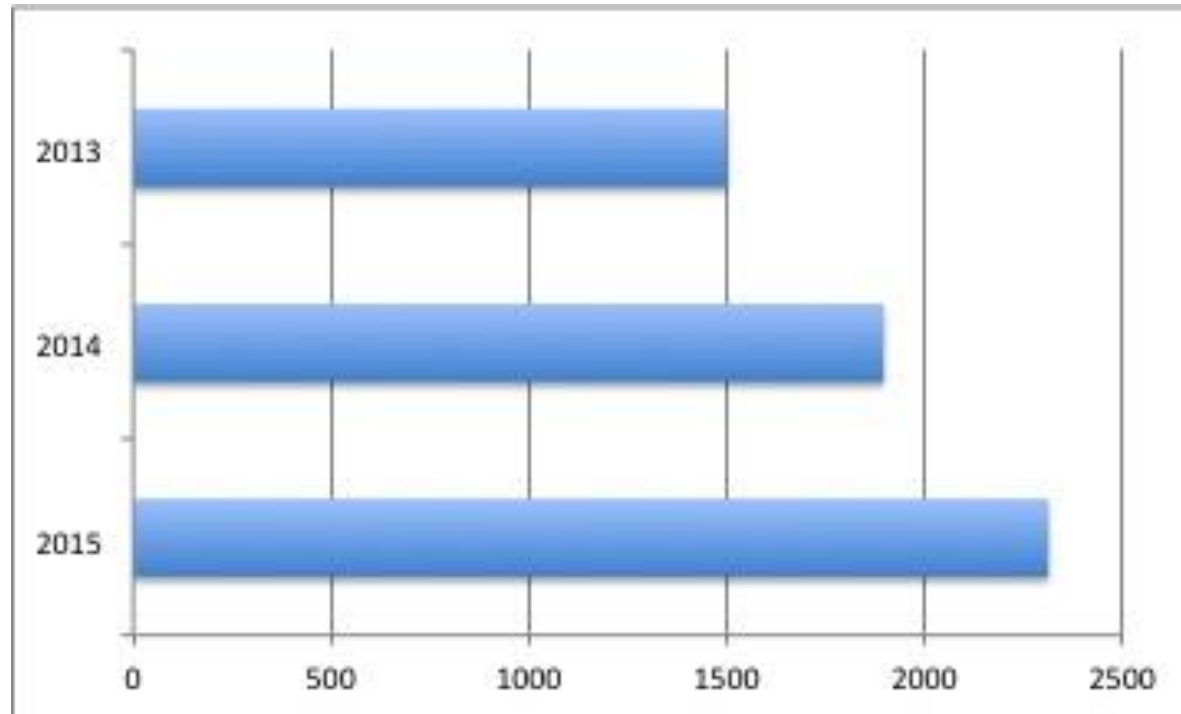
# CMC1 prothese: speerpunt in de handchirurgie

Medline scientific articles trend search 1950 - 2015:  
'trapeziometacarpal arthroplasty'  
'trapeziometacarpal prosthesis'

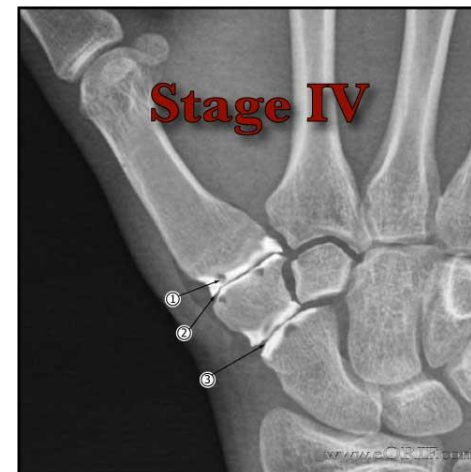
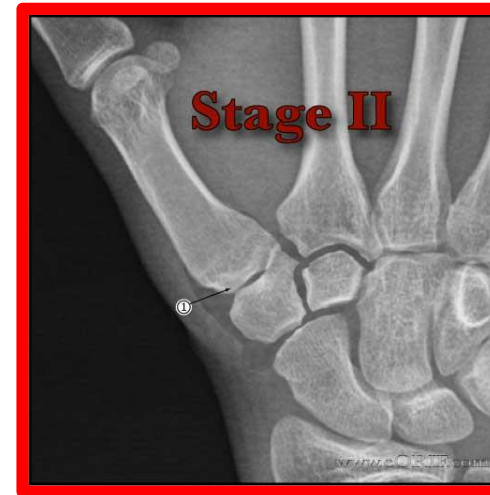
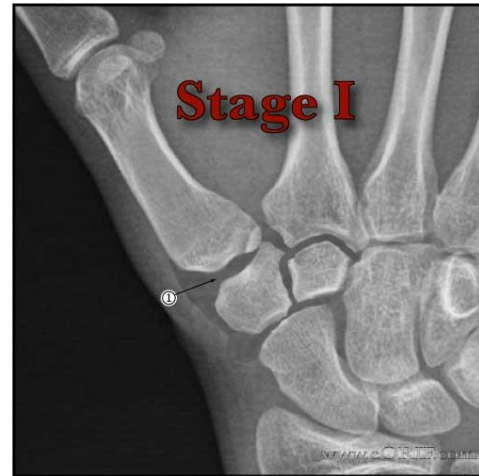


# CMC1 prothese: speerpunt in de handchirurgie

Aantal CMC1 prothesen geplaatst in België



# CMC1 prothese: indicaties



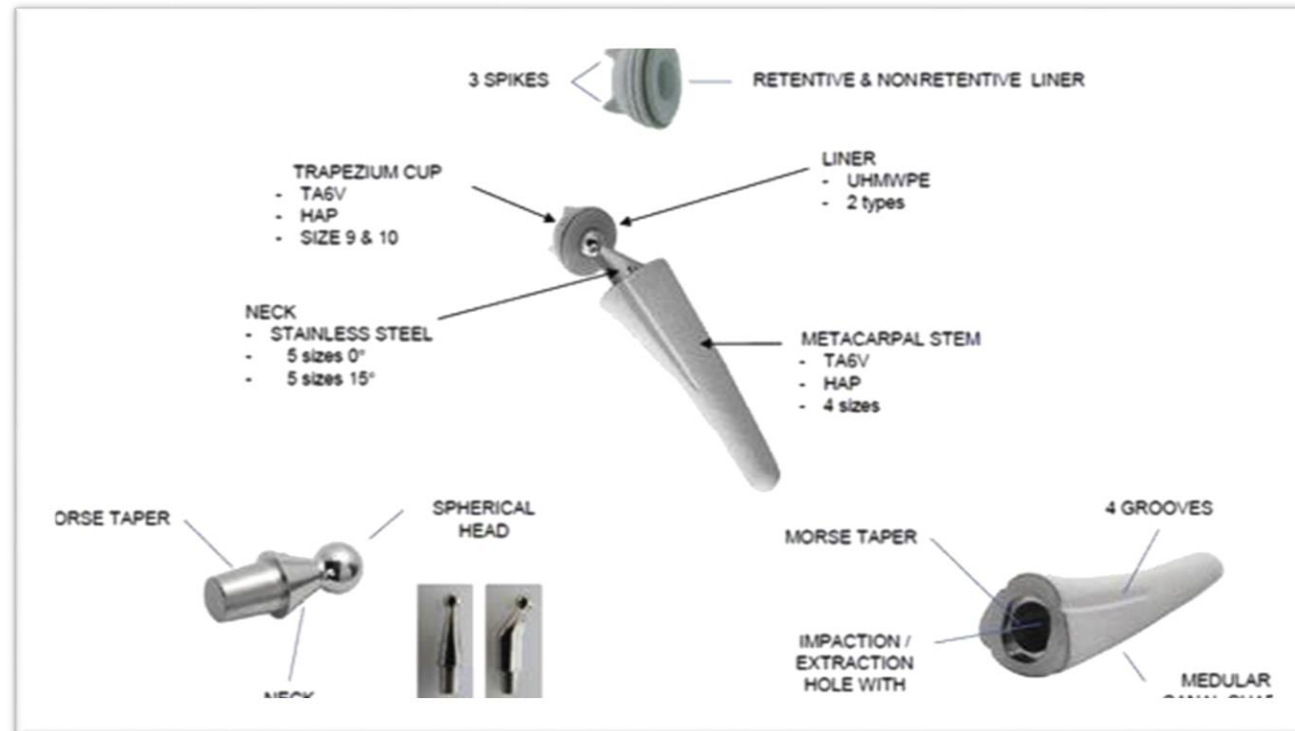
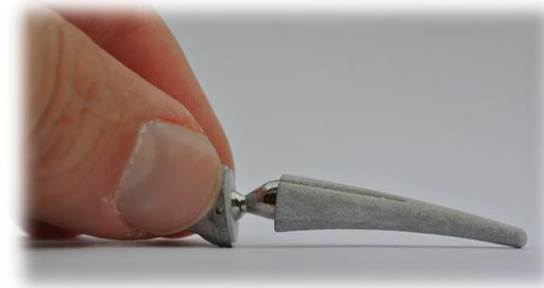
# CMC1 prothese: contra-indicaties

- Symptomatische STT artrose (stadium 4)
- Osteoporose
- Klein of dysplastisch trapezium
- Zware belasting
- Leeftijd < 50 jaar

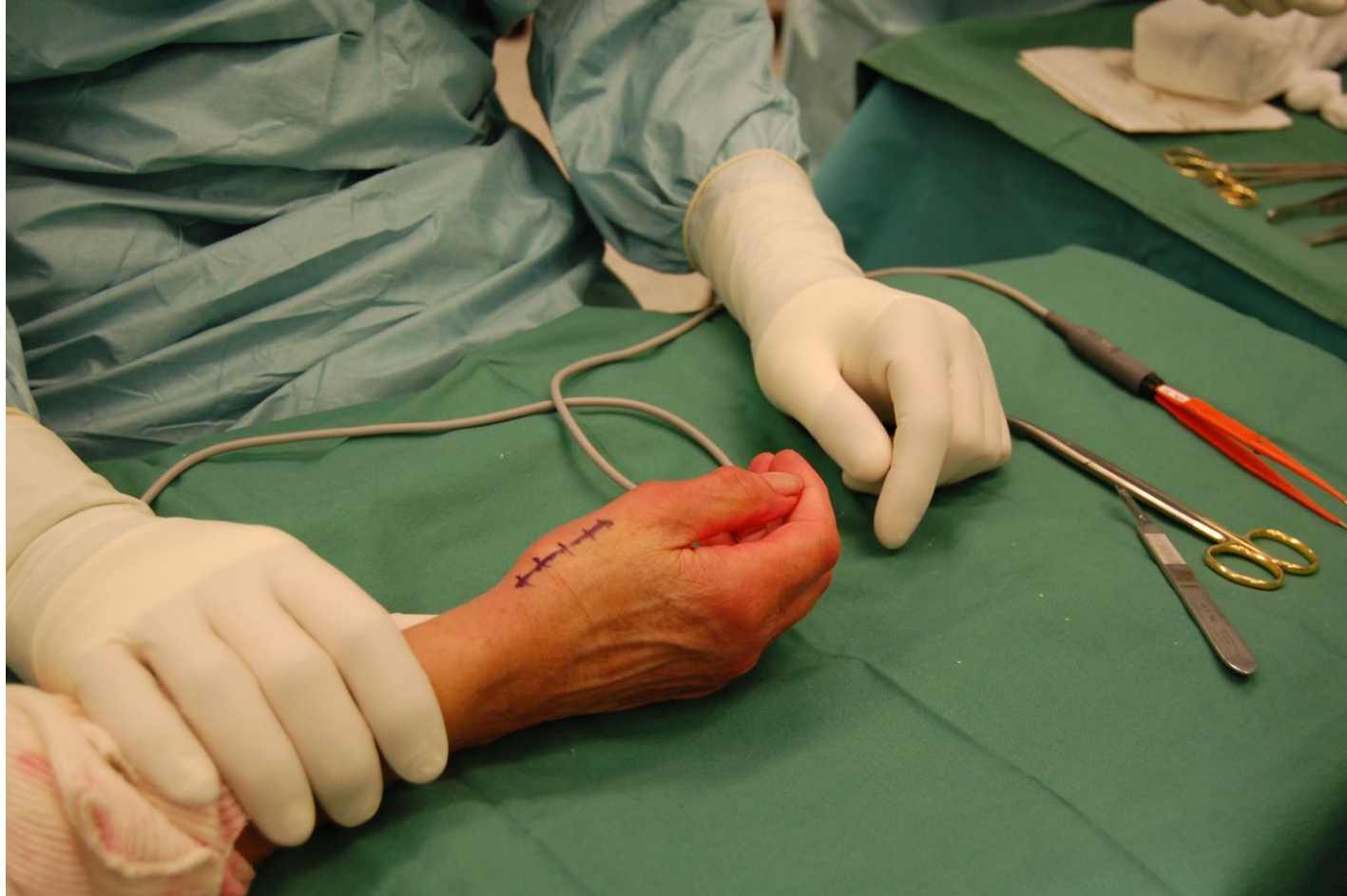


# CMC1 prothese

Vb: ARPE (1991)  
Ball-in-socket prothese  
Ongecementeerd  
Modulair



# Chirurgische toegang



Orthopedisch  
Centrum  
Limburg

ORTHOPAEDIC  
SURGERY AND  
TRAUMATOLOGY





# Steel in metacarpaal



# Cup in trapezium



Orthopedisch  
Centrum  
Limburg

ORTHOPAEDIC  
SURGERY AND  
TRAUMATOLOGY



# Cup in trapezium



Orthopedisch  
Centrum  
Limburg

ORTHOPAEDIC  
SURGERY AND  
TRAUMATOLOGY



# Kop-nek



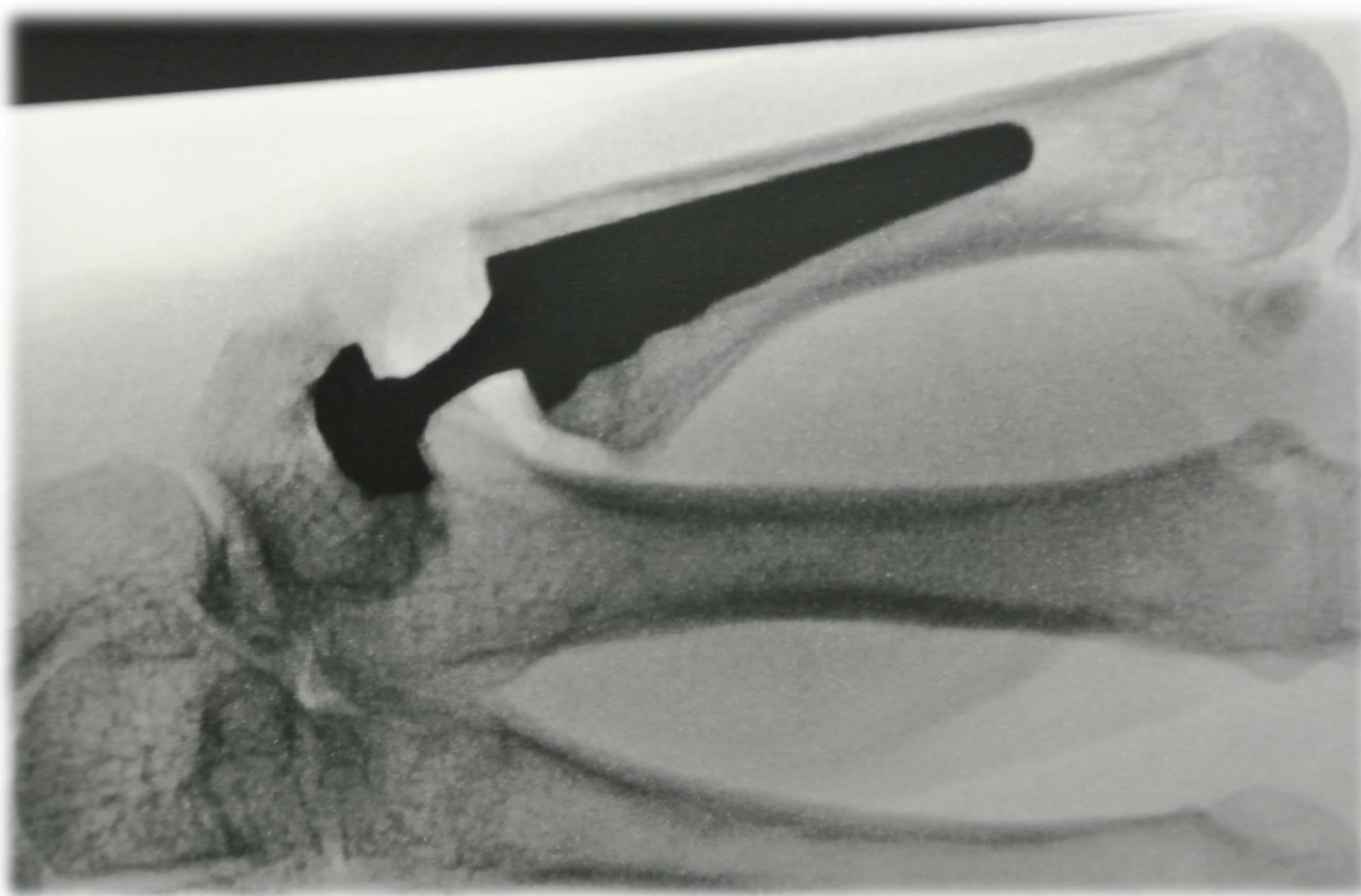


Orthopedisch  
Centrum  
Limburg

ORTHOPAEDIC  
SURGERY AND  
TRAUMATOLOGY



# Radiografie



Orthopedisch  
Centrum  
Limburg

ORTHOPAEDIC  
SURGERY AND  
TRAUMATOLOGY



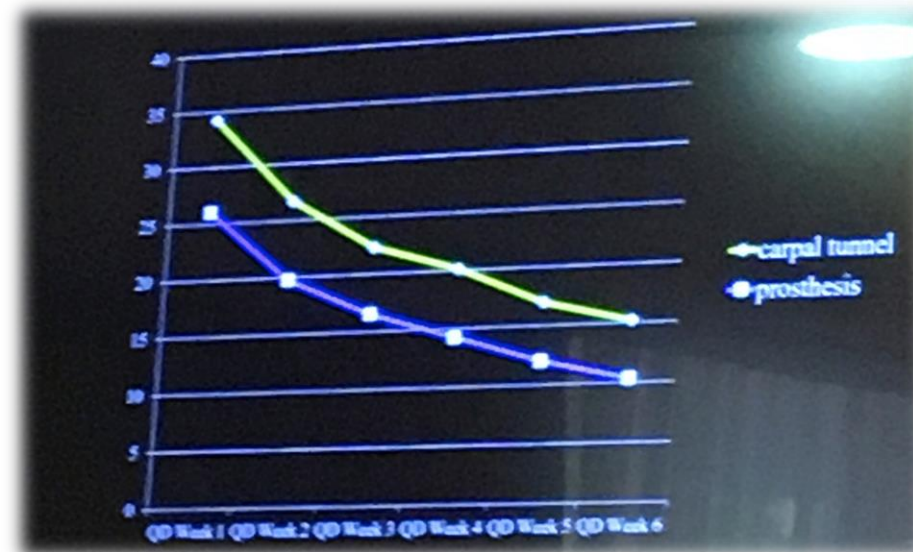
# Revalidatie

Week 1-3: gips

Week 4-6: mobilisatie

Week 7: belasting

Week 12: manuele arbeid



Dr L. Obert,, Congrès Arthrose Pouce, 2017



Orthopedisch  
Centrum  
Limburg

ORTHOPAEDIC  
SURGERY AND  
TRAUMATOLOGY



# Resultaat



Orthopedisch  
Centrum  
Limburg

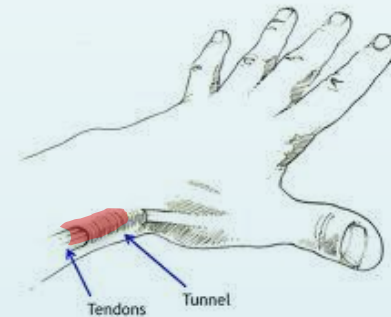
ORTHOPAEDIC  
SURGERY AND  
TRAUMATOLOGY





# Mogelijke complicaties

- De Quervain tendinitis
  - Incidentie: 16%
  - Begint meestal 3 maanden postoperatief
  - Oorzaak: overbelasting ?
  - Behandeling
    - Infiltratie
    - Operatieve release



- Luxatie



- Loslating



- Slijtage

## Heringreep

- Revisie prothese
- Trapezectomie



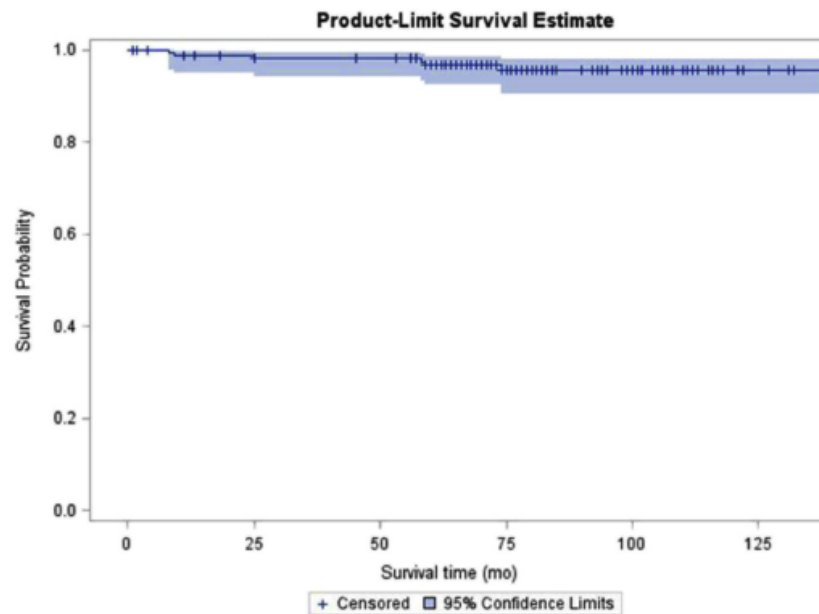
# Lange termijn resultaat

Significante verbetering van kracht, pijn en handfunctie.

Overleving

ARPE prothese:

- 96% op 6,6 jaar (*Cootjans et al, JHS Am 2017*)
- 93,9% op 10 jaar (*Martin-Ferreiro, 2005*)





**Orthopedisch  
Centrum  
Limburg**

ORTHOPAEDIC  
SURGERY AND  
TRAUMATOLOGY

[www.orthopedischcentrumlimburg.be](http://www.orthopedischcentrumlimburg.be)